

# 11

## Control elements

Hand wheels, star handles, star grips, clamping handles, and bow handles. Ball knobs. Wing screws and wing nuts.



**HDB**

Page: 2



**HDG**

Page: 3



**HRB**

Page: 4



**HRM**

Page: 5



**HSB**

Page: 6



**HSM**

Page: 7



**HSS**

Page: 8



**HST**

Page: 9



**HKB**

Page: 13



**HKI**

Page: 14



**HMC**

Page: 15



**SKA**

Page: 16



**HGA 1**

Page: 17



**HGB**

Page: 18



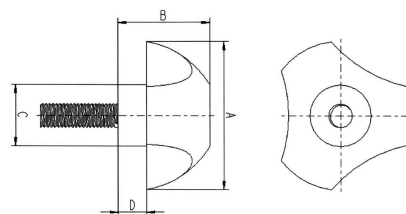
**HGC**

Page: 19

## Star knobs with threaded bolt

Application: hand wheels / star knobs  
Material: polyamide / steel  
Standard-Colour: black

HDB



Order No.	Handle Ø	Total height	Shaft Ø	Shaft height	Thread	Colour	PU*	MOQ**
	A	B	C	D				
767325010001000	25,0	16,0	12,0	5,0	M 4x15	black	100	-
767325020001000	25,0	16,0	12,0	5,0	M 5x18	black	100	500
767325030001000	25,0	16,0	12,0	5,0	M 6x20	black	100	500
767332010001000	32,0	20,0	15,0	6,0	M 6x10	black	100	500
767332020001000	32,0	20,0	15,0	6,0	M 6x20	black	100	100
767332030001000	32,0	20,0	15,0	6,0	M 6x30	black	100	-
767332040001000	32,0	20,0	15,0	6,0	M 8x27	black	100	-
767340010001000	40,0	25,0	17,0	8,0	M 6x15	black	100	-
767340020001000	40,0	25,0	17,0	8,0	M 6x20	black	100	-
767340030001000	40,0	25,0	17,0	8,0	M 6x30	black	100	-
767340040001000	40,0	25,0	17,0	8,0	M 6x40	black	100	-
767340050001000	40,0	25,0	17,0	8,0	M 8x20	black	100	-
767340060001000	40,0	25,0	17,0	8,0	M 8x33	black	50	100
767340070001000	40,0	25,0	17,0	8,0	M 8x47	black	50	100
767340080001000	40,0	25,0	17,0	8,0	M 10x20	black	50	100
767340090001000	40,0	25,0	17,0	8,0	M 10x33	black	50	100
767340100001000	40,0	25,0	17,0	8,0	M 10x44	black	75	-
767350010001000	50,0	31,0	19,0	9,0	M 8x15	black	50	100
767350020001000	50,0	31,0	19,0	9,0	M 8x27	black	50	100
767350030001000	50,0	31,0	19,0	9,0	M 8x40	black	50	100
767350040001000	50,0	31,0	19,0	9,0	M 10x33	black	50	100
767350050001000	50,0	31,0	19,0	9,0	M 10x50	black	50	-
767363010001000	63,0	39,0	26,0	12,0	M 10x33	black	25	100
767363020001000	63,0	39,0	26,0	12,0	M 12x40	black	25	100

Please note that the product illustrations are exemplary images that could deviate from the ordered/delivered products.

All of the dimensions are in mm should nothing to the contrary be stated.

\*PU = Packaging Unit, SW = Spanner opening, n.w. = not detachable, o. K. = excl. The head, o. B. = excl. The collar, m. R. = with the radius, MOQ = Minimum Order Quantity.

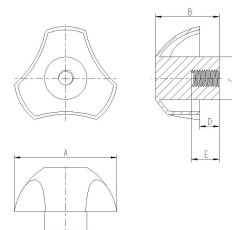
\*\* MOQ: Parts with MOQ, set-up costs may apply.

! We exclusively sell to the trade and industry. Please note our minimum order quantities and the minimum order value per delivery.  
We would be pleased to send you an offer that is tailored to your needs should you require special colours, deviating dimensions, bioplastics, or larger order quantities.

## Star knobs with threaded bush

HDG

Application: hand wheels / star knobs  
Material: polyamide / brass  
Standard-Colour: black



Order No.	Handle Ø	Total height	Shaft Ø	Shaft height	Thread	Thread depth	Colour	PU*	MOQ**
	A	B	C	D		E			
089904010001000	25,0	16,0	12,0	5,0	M 4	8,0	black	100	200
089904020001000	25,0	16,0	12,0	5,0	M 5	9,0	black	100	200
089904030001000	25,0	16,0	12,0	5,0	M 6	10,0	black	100	200
089904040001000	32,0	20,0	15,0	6,0	M 5	9,0	black	100	200
089904050001000	32,0	20,0	15,0	6,0	M 6	10,0	black	100	200
089904060001000	40,0	25,0	17,0	8,0	M 6	10,0	black	75	225
089904070001000	40,0	25,0	17,0	8,0	M 8	14,0	black	75	225
089904080001000	40,0	25,0	17,0	8,0	M 10	17,0	black	75	225
089904090001000	50,0	31,0	19,0	9,0	M 8	14,0	black	50	100
089904100001000	50,0	31,0	19,0	9,0	M 10	17,0	black	50	100
089904110001000	63,0	39,0	26,0	12,0	M 10	17,0	black	50	100

Please note that the product illustrations are exemplary images that could deviate from the ordered/delivered products.

All of the dimensions are in mm should nothing to the contrary be stated.

\*PU = Packaging Unit, SW = Spanner opening, n.w. = not detachable, o. K. = excl. The head, o. B. = excl. The collar, m. R. = with the radius, MOQ = Minimum Order Quantity.

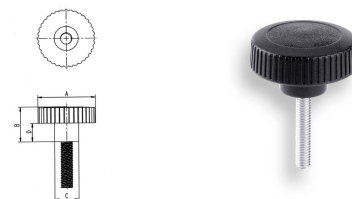
\*\* MOQ: Parts with MOQ, set-up costs may apply.

We exclusively sell to the trade and industry. Please note our minimum order quantities and the minimum order value per delivery.  
We would be pleased to send you an offer that is tailored to your needs should you require special colours, deviating dimensions, bioplastics, or larger order quantities.

## Hand wheels with threaded bolt

HRB

Application: hand wheels / star knobs  
 Material: polyamide / steel  
 Standard-Colour: black



Order No.	Handle Ø	Height	Shaft Ø	Shaft height	Thread	Colour	PU*	MOQ**
	A	B	C	D				
767222010001000	22,0	15,0	13,0	5,0	M 5x10	black	500	-
767222060001000	22,0	15,0	13,0	5,0	M 6x10	black	500	-
767222070001000	22,0	15,0	13,0	5,0	M 6x15	black	500	-
767222080001000	22,0	15,0	13,0	5,0	M 6x20	black	500	-
767222090001000	22,0	15,0	13,0	5,0	M 6x25	black	500	-
767222100001000	22,0	15,0	13,0	5,0	M 6x30	black	500	-
767230020001000	30,0	17,0	15,0	6,0	M 5x15	black	500	-
767230030001000	30,0	17,0	15,0	6,0	M 5x20	black	500	-
767230040001000	30,0	17,0	15,0	6,0	M 5x25	black	500	-
767230080001000	30,0	17,0	15,0	6,0	M 6x20	black	500	-
767230100001000	30,0	17,0	15,0	6,0	M 6x30	black	250	-
767230120001000	30,0	17,0	15,0	6,0	M 6x40	black	250	-
767230130001000	30,0	17,0	15,0	6,0	M 8x15	black	500	-
767230160001000	30,0	17,0	15,0	6,0	M 8x30	black	250	-
767230170001000	30,0	17,0	15,0	6,0	M 8x35	black	250	-
767240030001000	40,0	22,0	19,0	9,0	M 6x20	black	250	-
767240040001000	40,0	22,0	19,0	9,0	M 6x25	black	250	-
767240080001000	40,0	22,0	19,0	9,0	M 8x20	black	250	-
767240110001000	40,0	22,0	19,0	9,0	M 8x35	black	100	-
767250010001000	50,0	30,0	21,0	16,0	M 8x15	black	100	-
767250060001000	50,0	30,0	21,0	16,0	M 8x40	black	100	-
767250070001000	50,0	30,0	21,0	16,0	M 10x15	black	100	-
767250100001000	50,0	30,0	21,0	16,0	M 10x30	black	100	-
767250110001000	50,0	30,0	21,0	16,0	M 10x35	black	100	-

Please note that the product illustrations are exemplary images that could deviate from the ordered/delivered products.

All of the dimensions are in mm should nothing to the contrary be stated.

\*PU = Packaging Unit, SW = Spanner opening, n.w. = not detachable, o. K. = excl. The head, o. B. = excl. The collar, m. R. = with the radius, MOQ = Minimum Order Quantity.

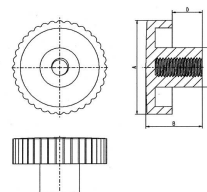
\*\* MOQ: Parts with MOQ, set-up costs may apply.

! We exclusively sell to the trade and industry. Please note our minimum order quantities and the minimum order value per delivery.  
 We would be pleased to send you an offer that is tailored to your needs should you require special colours, deviating dimensions, bioplastics, or larger order quantities.

## Hand wheels with threaded bush

Application: hand wheels / star knobs  
Material: polyamide/brass  
Standard-Colour: black

HRM




Order No.	Handle Ø	Height	Shaft Ø	Shaft height	Thread	Colour	PU*	MOQ**
	A	B	C	D				
089903010001000	22,0	15,0	13,0	5,0	M 4	black	500	500
089903020001000	22,0	15,0	13,0	5,0	M 5	black	500	500
089903030001000	22,0	15,0	13,0	5,0	M 6	black	500	500
089903050001000	30,0	17,0	15,0	6,0	M 6	black	500	500
089903060001000	30,0	17,0	15,0	6,0	M 8	black	500	500
089903070001000	40,0	22,0	19,0	9,0	M 6	black	250	250
089903080001000	40,0	22,0	19,0	9,0	M 8	black	250	250

Please note that the product illustrations are exemplary images that could deviate from the ordered/delivered products.

All of the dimensions are in mm should nothing to the contrary be stated.

\*PU = Packaging Unit, SW = Spanner opening, n.w. = not detachable, o. K. = excl. The head, o. B. = excl. The collar, m. R. = with the radius, MOQ = Minimum Order Quantity.

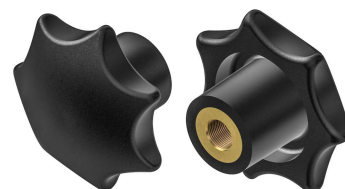
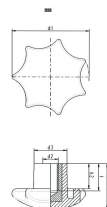
\*\* MOQ: Parts with MOQ, set-up costs may apply.

 We exclusively sell to the trade and industry. Please note our minimum order quantities and the minimum order value per delivery.  
We would be pleased to send you an offer that is tailored to your needs should you require special colours, deviating dimensions, bioplastics, or larger order quantities.

## Star knobs with brass threaded bush

HSB

Application: hand wheels / star knobs  
Material: polyamide  
Standard-Colour: black



Order No.	Handle Ø	Thread Ø	Shaft Ø	Total length	Shaft height	Thread depth	Colour	PU*	MOQ**
	d1	d2	d3	h1	h2	t			
AR3020M6S0001000	Ø 30	M 6	15	20	10	10	black	250	250
AR4023M5S0001000	Ø 40	M 5	16	23	11	12	black	250	-
AR4023M6S0001000	Ø 40	M 6	16	23	11	12	black	250	250
AR4023M8S0001000	Ø 40	M 8	16	23	11	12	black	250	250
AR5032M6S0001000	Ø 50	M 6	21	32	19	12	black	100	-
AR5032M10S0001000	Ø 50	M 10	21	32	19	20	black	100	-
AR6040M8S0001000	Ø 60	M 8	24	40	20	24	black	250	250
AR6040M10S0001000	Ø 60	M 10	24	40	20	24	black	250	250
AR8047M16S0001000	Ø 80	M 16	34	47	26	24	black	50	-

Please note that the product illustrations are exemplary images that could deviate from the ordered/delivered products.

All of the dimensions are in mm should nothing to the contrary be stated.

\*PU = Packaging Unit, SW = Spanner opening, n.w. = not detachable, o. K. = excl. The head, o. B. = excl. The collar, m. R. = with the radius, MOQ = Minimum Order Quantity.

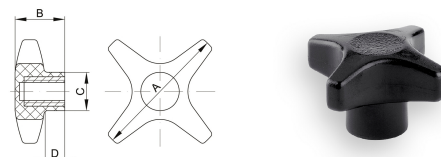
\*\* MOQ: Parts with MOQ, set-up costs may apply.

We exclusively sell to the trade and industry. Please note our minimum order quantities and the minimum order value per delivery.  
We would be pleased to send you an offer that is tailored to your needs should you require special colours, deviating dimensions, bioplastics, or larger order quantities.

## Hand knobs with threads bush

Application: hand wheels / star knobs  
Material: polyamide / brass  
Standard-Colour: black

HSM



Order No.	Handle Ø	Height	Thread	Shaft Ø	Shaft height	Colour	PU*	MOQ**
	A	B		C	D			
089906020001000	40,0	22,0	M 6	16,0	9,0	black	500	500
089906030001000	40,0	22,0	M 8	16,0	9,0	black	500	500
089906040001000	60,0	22,0	M 5	17,0	9,0	black	250	250
089906060001000	60,0	22,0	M 8	17,0	9,0	black	250	250
089906070001000	60,0	22,0	M 10	17,0	9,0	black	250	250

Please note that the product illustrations are exemplary images that could deviate from the ordered/delivered products.

All of the dimensions are in mm should nothing to the contrary be stated.

\*PU = Packaging Unit, SW = Spanner opening, n.w. = not detachable, o. K. = excl. The head, o. B. = excl. The collar, m. R. = with the radius, MOQ = Minimum Order Quantity.

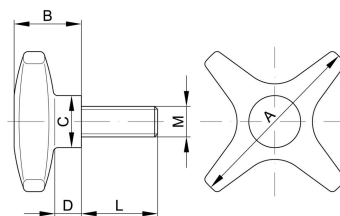
\*\* MOQ: Parts with MOQ, set-up costs may apply.

We exclusively sell to the trade and industry. Please note our minimum order quantities and the minimum order value per delivery.  
We would be pleased to send you an offer that is tailored to your needs should you require special colours, deviating dimensions, bioplastics, or larger order quantities.

## Hand knobs with threads bolt

Application: hand wheels / star knobs  
Material: polyamide / steel  
Standard-Colour: black

HSS



Order No.	Handle Ø	Height	Thread	Shaft Ø	Shaft height	Colour	PU*	MOQ**
	A	B		C	D			
767440020001000	40,0	22,0	M 5 x 15	16,0	9,0	black	250	-
767440050001000	40,0	22,0	M 5 x 30	16,0	9,0	black	250	-
767440070001000	40,0	22,0	M 6 x 15	16,0	9,0	black	250	-
767440080001000	40,0	22,0	M 6 x 20	16,0	9,0	black	250	-
767440090001000	40,0	22,0	M 6 x 25	16,0	9,0	black	250	-
767440130001000	40,0	22,0	M 8 x 15	16,0	9,0	black	250	-
767440140001000	40,0	22,0	M 8 x 20	16,0	9,0	black	250	-
767440150001000	40,0	22,0	M 8 x 25	16,0	9,0	black	250	-
767440170001000	40,0	22,0	M 8 x 35	16,0	9,0	black	250	-
767440180001000	40,0	22,0	M 8 x 40	16,0	9,0	black	250	-
767460010001000	60,0	22,0	M 5 x 15	17,0	9,0	black	250	-
767460020001000	60,0	22,0	M 6 x 10	17,0	9,0	black	250	-
767460030001000	60,0	22,0	M 6 x 15	17,0	9,0	black	250	-
767460040001000	60,0	22,0	M 6 x 20	17,0	9,0	black	250	-
767460050001000	60,0	22,0	M 6 x 25	17,0	9,0	black	250	-
767460060001000	60,0	22,0	M 6 x 30	17,0	9,0	black	250	-
767460070001000	60,0	22,0	M 6 x 35	17,0	9,0	black	250	-
767460100001000	60,0	22,0	M 8 x 20	17,0	9,0	black	250	-
767460110001000	60,0	22,0	M 8 x 25	17,0	9,0	black	250	-
767460160001000	60,0	22,0	M 10 x 20	17,0	9,0	black	250	-
767460180001000	60,0	22,0	M 10 x 30	17,0	9,0	black	100	-

Please note that the product illustrations are exemplary images that could deviate from the ordered/delivered products.

All of the dimensions are in mm should nothing to the contrary be stated.

\*PU = Packaging Unit, SW = Spanner opening, n.w. = not detachable, o. K. = excl. The head, o. B. = excl. The collar, m. R. = with the radius, MOQ = Minimum Order Quantity.

\*\* MOQ: Parts with MOQ, set-up costs may apply.

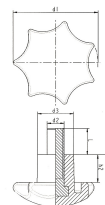
We exclusively sell to the trade and industry. Please note our minimum order quantities and the minimum order value per delivery.  
We would be pleased to send you an offer that is tailored to your needs should you require special colours, deviating dimensions, bioplastics, or larger order quantities.



## Star knobs with threaded bolt

HST

Application: hand wheels / star knobs  
 Material: polyamide  
 Standard-Colour: black



Order No.	Handle Ø	Thread Ø	Shaft Ø	Total length	Shaft height	Colour	PU*	MOQ**
	d1	d2 x L	d3	h1	h2			
AR2516M410S0001000	Ø 25	M 4x10	13	16	8	black	250	-
AR2516M510S0001000	Ø 25	M 5x10	13	16	8	black	500	-
AR2516M515S0001000	Ø 25	M 5x15	13	16	8	black	500	500
AR2516M520S0001000	Ø 25	M 5x20	13	16	8	black	500	-
AR2516M540S0001000	Ø 25	M 5x40	13	16	8	black	250	-
AR2516M550S0001000	Ø 25	M 5x50	13	16	8	black	500	-
AR2516M610S0001000	Ø 25	M 6x10	13	16	8	black	500	-
AR2516M630S0001000	Ø 25	M 6x30	13	16	8	black	250	250
AR2516M645S0001000	Ø 25	M 6x45	13	16	8	black	500	500
AR2516M650S0001000	Ø 25	M 6x50	13	16	8	black	250	500
AR2516M660S0001000	Ø 25	M 6x60	13	16	8	black	250	500
AR3020M510S0001000	Ø 30	M 5x10	15	20	10	black	100	-
AR3020M515S0001000	Ø 30	M 5x15	15	20	10	black	100	-
AR3020M520S0001000	Ø 30	M 5x20	15	20	10	black	250	-
AR3020M525S0001000	Ø 30	M 5x25	15	20	10	black	250	-
AR3020M545S0001000	Ø 30	M 5x45	15	20	10	black	100	-
AR3020M610S0001000	Ø 30	M 6x10	15	20	10	black	250	-
AR3020M615S0001000	Ø 30	M 6x15	15	20	10	black	500	500
AR3020M620S0001000	Ø 30	M 6x20	15	20	10	black	500	500
AR3020M625S0001000	Ø 30	M 6x25	15	20	10	black	250	-
AR3020M630S0001000	Ø 30	M 6x30	15	20	10	black	250	-
AR3020M635S0001000	Ø 30	M 6x35	15	20	10	black	250	-
AR3020M645S0001000	Ø 30	M 6x45	15	20	10	black	250	250
AR3020M650S0001000	Ø 30	M 6x50	15	20	10	black	250	-
AR3020M660S0001000	Ø 30	M 6x60	15	20	10	black	250	-
AR3020M670S0001000	Ø 30	M 6x70	15	20	10	black	250	-
AR3020M815S0001000	Ø 30	M 8x15	15	20	10	black	250	250
AR3020M835S0001000	Ø 30	M 8x35	15	20	10	black	250	-
AR3020M860S0001000	Ø 30	M 8x60	15	20	10	black	250	-
AR4023M510S0001000	Ø 40	M 5x10	16	23	11	black	100	-
AR4023M520S0001000	Ø 40	M 5x20	16	23	11	black	250	-

Please note that the product illustrations are exemplary images that could deviate from the ordered/delivered products.

All of the dimensions are in mm should nothing to the contrary be stated.

\*PU = Packaging Unit, SW = Spanner opening, n.w. = not detachable, o. K. = excl. The head, o. B. = excl. The collar, m. R. = with the radius, MOQ = Minimum Order Quantity.

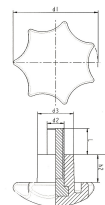
\*\* MOQ: Parts with MOQ, set-up costs may apply.

! We exclusively sell to the trade and industry. Please note our minimum order quantities and the minimum order value per delivery.  
 We would be pleased to send you an offer that is tailored to your needs should you require special colours, deviating dimensions, bioplastics, or larger order quantities.

## Star knobs with threaded bolt

Application: hand wheels / star knobs  
Material: polyamide  
Standard-Colour: black

HST



Order No.	Handle Ø	Thread Ø	Shaft Ø	Total length	Shaft height	Colour	PU*	MOQ**
	d1	d2 x L	d3	h1	h2			
AR4023M610S0001000	Ø 40	M 6x10	16	23	11	black	250	-
AR4023M620S0001000	Ø 40	M 6x20	16	23	11	black	250	-
AR4023M625S0001000	Ø 40	M 6x25	16	23	11	black	250	-
AR4023M635S0001000	Ø 40	M 6x35	16	23	11	black	100	-
AR4023M640S0001000	Ø 40	M 6x40	16	23	11	black	250	-
AR4023M650S0001000	Ø 40	M 6x50	16	23	11	black	250	-
AR4023M660S0001000	Ø 40	M 6x60	16	23	11	black	250	-
AR4023M810S0001000	Ø 40	M 8x10	16	23	11	black	250	-
AR4023M820S0001000	Ø 40	M 8x20	16	23	11	black	250	-
AR4023M825S0001000	Ø 40	M 8x25	16	23	11	black	250	-
AR4023M830S0001000	Ø 40	M 8x30	16	23	11	black	250	-
AR4023M835S0001000	Ø 40	M 8x35	16	23	11	black	250	-
AR4023M850S0001000	Ø 40	M 8x50	16	23	11	black	250	-
AR4023M855S0001000	Ø 40	M 8x50	16	23	11	black	250	-
AR4023M860S0001000	Ø 40	M 8x60	16	23	11	black	250	-
AR4023M870S0001000	Ø 40	M 8x70	16	23	11	black	250	-
AR4023M880S0001000	Ø 40	M 8x80	16	23	11	black	100	-
AR4023M895S0001000	Ø 40	M 8x95	16	23	11	black	100	-
AR4023M8110S0001000	Ø 40	M 8x110	16	23	11	black	50	-
AR5032M620S0001000	Ø 50	M 6x20	21	32	19	black	250	-
AR5032M635S0001000	Ø 50	M 6x35	21	32	19	black	250	-
AR5032M640S0001000	Ø 50	M 6x40	21	32	19	black	250	-
AR5032M650S0001000	Ø 50	M 6x50	21	32	19	black	100	-
AR5032M660S0001000	Ø 50	M 6x60	21	32	19	black	250	-
AR5032M810S0001000	Ø 50	M 8x10	21	32	19	black	250	-
AR5032M815S0001000	Ø 50	M 8x15	21	32	19	black	250	-
AR5032M830S0001000	Ø 50	M 8x30	21	32	19	black	100	-
AR5032M835S0001000	Ø 50	M 8x35	21	32	19	black	250	-
AR5032M840S0001000	Ø 50	M 8x40	21	32	19	black	250	-
AR5032M845S0001000	Ø 50	M 8x45	21	32	19	black	250	-
AR5032M860S0001000	Ø 50	M 8x60	21	32	19	black	100	250

Please note that the product illustrations are exemplary images that could deviate from the ordered/delivered products.

All of the dimensions are in mm should nothing to the contrary be stated.

\*PU = Packaging Unit, SW = Spanner opening, n.w. = not detachable, o. K. = excl. The head, o. B. = excl. The collar, m. R. = with the radius, MOQ = Minimum Order Quantity.

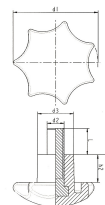
\*\* MOQ: Parts with MOQ, set-up costs may apply.

We exclusively sell to the trade and industry. Please note our minimum order quantities and the minimum order value per delivery.  
We would be pleased to send you an offer that is tailored to your needs should you require special colours, deviating dimensions, bioplastics, or larger order quantities.

## Star knobs with threaded bolt

Application: hand wheels / star knobs  
Material: polyamide  
Standard-Colour: black

HST



Order No.	Handle Ø	Thread Ø	Shaft Ø	Total length	Shaft height	Colour	PU*	MOQ**
	d1	d2 x L	d3	h1	h2			
AR5032M870S0001000	Ø 50	M 8x70	21	32	19	black	50	-
AR5032M875S0001000	Ø 50	M 8x75	21	32	19	black	50	-
AR5032M890S0001000	Ø 50	M 8x90	21	32	19	black	200	-
AR5032M8100S0001000	Ø 50	M 8x100	21	32	19	black	200	200
AR5032M8120S0001000	Ø 50	M 8x120	21	32	19	black	200	200
AR5032M1025S0001000	Ø 50	M 10x25	21	32	19	black	100	-
AR5032M1030S0001000	Ø 50	M 10x30	21	32	19	black	100	-
AR5032M1045S0001000	Ø 50	M 10x45	21	32	19	black	100	-
AR5032M1050S0001000	Ø 50	M 10x50	21	32	19	black	100	-
AR5032M1060S0001000	Ø 50	M 10x60	21	32	19	black	100	-
AR5032M1080S0001000	Ø 50	M 10x80	21	32	19	black	100	-
AR6040M815S0001000	Ø 60	M 8x15	24	40	20	black	250	250
AR6040M820S0001000	Ø 60	M 8x20	24	40	20	black	50	50
AR6040M830S0001000	Ø 60	M 8x30	24	40	20	black	200	200
AR6040M845S0001000	Ø 60	M 8x45	24	40	20	black	200	200
AR6040M865S0001000	Ø 60	M 8x65	24	40	20	black	200	-
AR6040M8120S0001000	Ø 60	M 8x120	24	40	20	black	50	-
AR6040M1016S0001000	Ø 60	M 10x16	24	40	20	black	100	-
AR6040M1020S0001000	Ø 60	M 10x20	24	40	20	black	100	-
AR6040M1025S0001000	Ø 60	M 10x25	24	40	20	black	100	-
AR6040M1030S0001000	Ø 60	M 10x30	24	40	20	black	100	-
AR6040M1035S0001000	Ø 60	M 10x35	24	40	20	black	100	-
AR6040M1040S0001000	Ø 60	M 10x40	24	40	20	black	100	-
AR6040M1045S0001000	Ø 60	M 10x45	24	40	20	black	100	-
AR6040M1060S0001000	Ø 60	M 10x60	24	40	20	black	100	-
AR6040M1215S0001000	Ø 60	M 12x15	24	40	20	black	50	-
AR6040M1230S0001000	Ø 60	M 12x30	24	40	20	black	50	-
AR6040M1235S0001000	Ø 60	M 12x35	24	40	20	black	50	-
AR6040M1260S0001000	Ø 60	M 12x60	24	40	20	black	50	-
AR8049M820S0001000	Ø 80	M 8x20	34	49	26	black	50	-
AR8049M825S0001000	Ø 80	M 8x25	34	49	26	black	50	-

Please note that the product illustrations are exemplary images that could deviate from the ordered/delivered products.

All of the dimensions are in mm should nothing to the contrary be stated.

\*PU = Packaging Unit, SW = Spanner opening, n.w. = not detachable, o. K. = excl. The head, o. B. = excl. The collar, m. R. = with the radius, MOQ = Minimum Order Quantity.

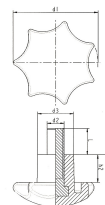
\*\* MOQ: Parts with MOQ, set-up costs may apply.

We exclusively sell to the trade and industry. Please note our minimum order quantities and the minimum order value per delivery.  
We would be pleased to send you an offer that is tailored to your needs should you require special colours, deviating dimensions, bioplastics, or larger order quantities.

## Star knobs with threaded bolt

Application: hand wheels / star knobs  
Material: polyamide  
Standard-Colour: black

HST



Order No.	Handle Ø	Thread Ø	Shaft Ø	Total length	Shaft height	Colour	PU*	MOQ**
	d1	d2 x L	d3	h1	h2			
AR8049M1030S0001000	Ø 80	M 10x30	34	49	26	black	25	-
AR8049M1050S0001000	Ø 80	M 10x50	34	49	26	black	50	-
AR8049M1240S0001000	Ø 80	M 12x40	34	49	26	black	50	-
AR8049M1250S0001000	Ø 80	M 12x50	34	49	26	black	50	-
AR8049M1260S0001000						black	50	-
AR8049M1290S0001000	Ø 80	M 12x90	34	49	26	black	50	-
AR8049M1615S0001000	Ø 80	M 16x15	34	49	26	black	50	-
AR8049M1640S0001000	Ø 80	M 16x40	34	49	26	black	25	50
AR8049M1650S0001000	Ø 80	M 16x50	34	49	26	black	50	-

Please note that the product illustrations are exemplary images that could deviate from the ordered/delivered products.

All of the dimensions are in mm should nothing to the contrary be stated.

\*PU = Packaging Unit, SW = Spanner opening, n.w. = not detachable, o. K. = excl. The head, o. B. = excl. The collar, m. R. = with the radius, MOQ = Minimum Order Quantity.

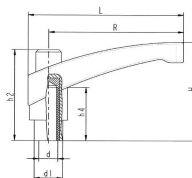
\*\* MOQ: Parts with MOQ, set-up costs may apply.

We exclusively sell to the trade and industry. Please note our minimum order quantities and the minimum order value per delivery.  
We would be pleased to send you an offer that is tailored to your needs should you require special colours, deviating dimensions, bioplastics, or larger order quantities.

## Clamping handles with threaded bolt

HKB

Application: clamping handles  
 Material: polyamide  
 Standard-Colour: black



Order No.	Length	Threaded bolt	Shaft Ø	Total length	Height	Height	Height	Colour	PU*	MOQ**
	R	d x e	d1	L	h1	H	h4			
ALSS43M510S0001000	43	M 5x10	13	51	33	37	23	black	50	-
ALSS43M520S0001000	43	M 5x20	13	51	33	37	23	black	50	-
ALSS43M615S0001000	43	M 6x15	13	51	33	37	23	black	50	-
ALSS43M625S0001000	43	M 6x25	13	51	33	37	23	black	50	-
ALSS43M640S0001000	43	M 6x40	13	51	33	37	23	black	50	-
ALSS65M615S0001000	65	M 6x15	16	75	41	50	26	black	50	-
ALSS65M620S0001000	65	M 6x20	16	75	41	50	26	black	50	-
ALSS65M630S0001000	65	M 6x30	16	75	41	50	26	black	50	-
ALSS65M640S0001000	65	M 6x40	16	75	41	50	26	black	50	-
ALSS65M820S0001000	65	M 8x20	16	75	41	50	26	black	50	-
ALSS65M833S0001000	65	M 8x33	16	75	41	50	26	black	50	-
ALSS65M847S0001000	65	M 8x47	16	75	40	50	26	black	50	-
ALSS65M1020S0001000	65	M 10x20	16	75	41	50	26	black	50	-
ALSS65M1030S0001000	65	M 10x30	16	75	41	50	26	black	50	-
ALSS65M1040S0001000	65	M 10x40	16	75	41	50	26	black	50	-
ALSS85M820S0001000	85	M 8x20	18	98	52	65	34	black	25	-
ALSS85M833S0001000	85	M 8x33	18	98	52	65	34	black	25	-
ALSS85M847S0001000	85	M 8x47	18	98	52	65	34	black	25	-
ALSS85M1020S0001000	85	M 10x20	18	98	52	65	34	black	25	-
ALSS85M1030S0001000	85	M 10x30	18	98	52	65	34	black	25	-
ALSS85M1040S0001000	85	M 10x40	18	98	52	65	34	black	25	-
ALSS85M1230S0001000	85	M 12x30	18	98	52	65	34	black	25	-
ALSS85M1240S0001000	85	M 12x40	18	98	52	65	34	black	25	-
ALSS85M1260S0001000	85	M 12x60	18	98	52	65	34	black	25	-

Please note that the product illustrations are exemplary images that could deviate from the ordered/delivered products.

All of the dimensions are in mm should nothing to the contrary be stated.

\*PU = Packaging Unit, SW = Spanner opening, n.w. = not detachable, o. K. = excl. The head, o. B. = excl. The collar, m. R. = with the radius, MOQ = Minimum Order Quantity.

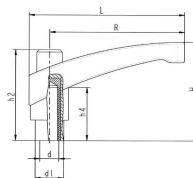
\*\* MOQ: Parts with MOQ, set-up costs may apply.

**I** We exclusively sell to the trade and industry. Please note our minimum order quantities and the minimum order value per delivery.  
 We would be pleased to send you an offer that is tailored to your needs should you require special colours, deviating dimensions, bioplastics, or larger order quantities.

## Clamping handles with brass threaded bush

HKI

Application: clamping handles  
Material: polyamide  
Standard-Colour: black



Order No.	Length	Thread Ø	Shaft Ø	Total length	Height	Total height	Height	Colour	PU*	MOQ**
	R	d	d1	L	h2	H	h4			
ALSS43M4S0001000	43	M 4	13	51	33	37	23	black	50	50
ALSS43M5S0001000	43	M 5	13	51	33	37	23	black	50	50
ALSS43M6S0001000	43	M 6	13	51	33	37	23	black	50	50
ALSS65M6S0001000	65	M 6	16	75	41	50	26	black	50	-
ALSS65M8S0001000	65	M 8	16	75	41	50	26	black	50	50
ALSS65M10S0001000	65	M 10	16	75	41	50	26	black	50	50
ALSS85M8S0001000	85	M 8	18	98	52	65	34	black	25	25
ALSS85M10S0001000	85	M 10	18	98	52	65	34	black	25	25
ALSS85M12S0001000	85	M 12	18	98	52	65	34	black	25	25

Please note that the product illustrations are exemplary images that could deviate from the ordered/delivered products.

All of the dimensions are in mm should nothing to the contrary be stated.

\*PU = Packaging Unit, SW = Spanner opening, n.w. = not detachable, o. K. = excl. The head, o. B. = excl. The collar, m. R. = with the radius, MOQ = Minimum Order Quantity.

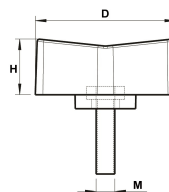
\*\* MOQ: Parts with MOQ, set-up costs may apply.

We exclusively sell to the trade and industry. Please note our minimum order quantities and the minimum order value per delivery.  
We would be pleased to send you an offer that is tailored to your needs should you require special colours, deviating dimensions, bioplastics, or larger order quantities.

## Wing screws

Application: wing screws / wing nuts  
Material: polyamide / steel  
Standard-Colour: black

HMC



Order No.	Wing Ø	Wing height	Threaded bolt	Colour	PU*	MOQ**
	D	H	M			
IFI040120001000	30,0	12,0	M 4 x 12/13	black	1000	1000
IFI050100001000	30,0	12,0	M 5 x 10	black	1000	1000
IFI050150001000	30,0	12,0	M 5 x 15	black	1000	1000
IFI050190001000	30,0	12,0	M 5 x 19	black	1000	1000
IFI050240001000	30,0	12,0	M 5 x 24	black	1000	1000
IFI050290001000	30,0	12,0	M 5 x 29	black	1000	1000
IFI050340001000	30,0	12,0	M 5 x 34	black	1000	1000
IFI050390001000	30,0	12,0	M 5 x 39	black	1000	1000
IFI050490001000	30,0	12,0	M 5 x 49	black	1000	1000
IFI060100001000	30,0	12,0	M 6 x 10	black	1000	1000
IFI060120001000	30,0	12,0	M 6 x 12	black	1000	1000
IFI060140001000	30,0	12,0	M 6 x 14	black	1000	1000
IFI060160001000	30,0	12,0	M 6 x 16	black	1000	1000
IFI060200001000	30,0	12,0	M 6 x 20	black	1000	1000
IFI060230001000	30,0	12,0	M 6 x 23	black	1000	1000
IFI060280001000	30,0	12,0	M 6 x 28	black	1000	1000
IFI060330001000	30,0	12,0	M 6 x 33	black	1000	1000
IFI060380001000	30,0	12,0	M 6 x 38	black	1000	1000
IFI060430001000	30,0	12,0	M 6 x 43	black	1000	1000
IFI060480001000	30,0	12,0	M 6 x 48	black	1000	1000
IFI060530001000	30,0	12,0	M 6 x 53	black	1000	1000
IFI060580001000	30,0	12,0	M 6 x 58	black	1000	1000

Please note that the product illustrations are exemplary images that could deviate from the ordered/delivered products.

All of the dimensions are in mm should nothing to the contrary be stated.

\*PU = Packaging Unit, SW = Spanner opening, n.w. = not detachable, o. K. = excl. The head, o. B. = excl. The collar, m. R. = with the radius, MOQ = Minimum Order Quantity.

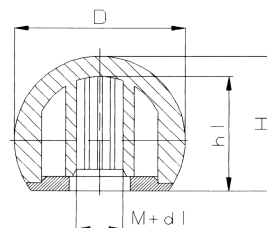
\*\* MOQ: Parts with MOQ, set-up costs may apply.

! We exclusively sell to the trade and industry. Please note our minimum order quantities and the minimum order value per delivery.  
We would be pleased to send you an offer that is tailored to your needs should you require special colours, deviating dimensions, bioplastics, or larger order quantities.

## Ball knobs with cover disk

SKA

Application: balls  
Material: acrylonitrile butadiene styrene  
Standard-Colour: black



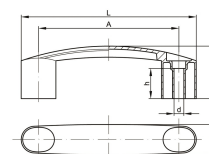
Order No.	Diameter	With thread M	With hole d1	Depth h1	Height H	Colour	PU*	MOQ**
870616260001000	Ø 20	M 5		15,5	18,0	black	2000	2000
870616130001000	Ø 20	M 6		15,5	18,0	black	2000	2000
870616140001000	Ø 20	M 8		15,5	18,0	black	2000	2000
870616160001000	Ø 20	M 10		15,5	18,0	black	2000	2000
870616250001000	Ø 20	-	Ø 5	15,5	18,0	black	2000	2000
870616110001000	Ø 20	-	Ø 6	15,5	18,0	black	2000	2000
870616120001000	Ø 20	-	Ø 8	15,5	18,0	black	2000	2000
870616150001000	Ø 20	-	Ø 10	15,5	18,0	black	2000	-
870616010001000	Ø 25	M 6	-	20,0	22,5	black	1000	-
870616020001000	Ø 25	M 8	-	20,0	22,5	black	500	-
870616180001000	Ø 25	M 10	-	20,0	22,5	black	2000	2000
870615990001000	Ø 25	-	Ø 6	20,0	22,5	black	2000	2000
870616000001000	Ø 25	-	Ø 8	20,0	22,5	black	2000	-
870616170001000	Ø 25	-	Ø 10	20,0	22,5	black	2000	2000
870616050001000	Ø 32	M 6	-	26,5	29,0	black	1000	2000
870616060001000	Ø 32	M 8	-	26,5	29,0	black	1000	-
870616200001000	Ø 32	M 10	-	26,5	29,0	black	500	-
870616300001000	Ø 32	M 12	-	26,5	29,0	black	1000	2000
870616030001000	Ø 32	-	Ø 6	26,5	29,0	black	1000	2000
870616040001000	Ø 32	-	Ø 8	26,5	29,0	black	1000	2000
870616190001000	Ø 32	-	Ø 10	26,5	29,0	black	1000	2000
870616290001000	Ø 32	-	Ø 12	26,5	29,0	black	1000	2000
870616220001000	Ø 40	M 6	-	34,5	37,0	black	500	1500
870616090001000	Ø 40	M 8	-	34,5	37,0	black	500	-
870616100001000	Ø 40	M 10	-	34,5	37,0	black	500	-
870616330001000	Ø 40	M 12	-	34,5	37,0	black	500	1500
870616310001000	Ø 40	-	Ø 5	34,5	37,0	black	500	1500
870616210001000	Ø 40	-	Ø 6	34,5	37,0	black	500	1500
870616070001000	Ø 40	-	Ø 8	34,5	37,0	black	500	1500
870616080001000	Ø 40	-	Ø 10	34,5	37,0	black	500	1500
870616320001000	Ø 40	-	Ø 12	34,5	37,0	black	500	1500



## Bow-type handles

Application: handles  
Material: PA GF  
Standard-Colour: black

## HGA 1




Order No.	Spacing <b>A</b>	Length <b>L</b>	Width <b>C</b>	Height <b>B</b>	Height <b>h</b>	Hole Ø	Colour	PU*	MOQ**
T1155090001000	93 +/-1	116	20	35	20	6,5	black	75	75
T1155100001000	109 +/-1	141	25	42	20	8,5	black	25	-
T1155110001000	117 +/-1	141	25	42	20	8,5	black	25	100
T1155130001000	132 +/-1	163	29	45	22	8,5	black	25	-
T1155140001000	150 +/-1	181	31	48	25	8,5	black	100	100

Please note that the product illustrations are exemplary images that could deviate from the ordered/delivered products.

All of the dimensions are in mm should nothing to the contrary be stated.

\*PU = Packaging Unit, SW = Spanner opening, n.w. = not detachable, o. K. = excl. The head, o. B. = excl. The collar, m. R. = with the radius, MOQ = Minimum Order Quantity.

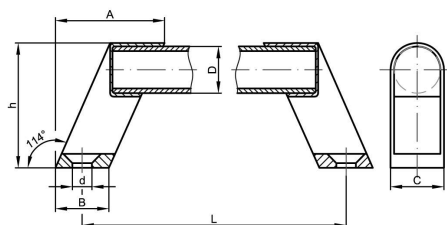
\*\* MOQ: Parts with MOQ, set-up costs may apply.

 We exclusively sell to the trade and industry. Please note our minimum order quantities and the minimum order value per delivery.  
We would be pleased to send you an offer that is tailored to your needs should you require special colours, deviating dimensions, bioplastics, or larger order quantities.

## Bow-type handles

Application: handles  
Material: PA GF / aluminum  
Standard-Colour: black

HGB



Order No.	Handle Ø	Length	Spacing	Width	Width	Height	Hole Ø	Colour	PU*	MOQ**
	D	L	A	B	C	h	d			
T11560010001000	20	200 +/-1	47	23	26	53	6,4	black	10	10
T11560020001000	20	300 +/-1	47	23	26	53	6,4	black	10	10
T11560030001000	20	400 +/-1	47	23	26	53	6,4	black	10	10
T11560040001000	20	500 +/-1	47	23	26	53	6,4	black	10	-
T11560050001000	20	700 +/-1	47	23	26	53	6,4	black	10	10
T11560060001000	25	200 +/-1	56	29	32	60	8,4	black	10	10
T11560070001000	25	300 +/-1	56	29	32	60	8,4	black	10	10
T11560080001000	25	400 +/-1	56	29	32	60	8,4	black	10	10
T11560090001000	25	500 +/-1	56	29	32	60	8,4	black	10	10
T11560100001000	25	700 +/-1	56	29	32	60	8,4	black	10	10

Please note that the product illustrations are exemplary images that could deviate from the ordered/delivered products.

All of the dimensions are in mm should nothing to the contrary be stated.

\*PU = Packaging Unit, SW = Spanner opening, n.w. = not detachable, o. K. = excl. The head, o. B. = excl. The collar, m. R. = with the radius, MOQ = Minimum Order Quantity.

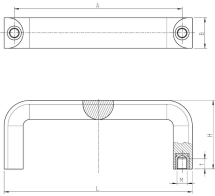
\*\* MOQ: Parts with MOQ, set-up costs may apply.

We exclusively sell to the trade and industry. Please note our minimum order quantities and the minimum order value per delivery.  
We would be pleased to send you an offer that is tailored to your needs should you require special colours, deviating dimensions, bioplastics, or larger order quantities.

# Bow-type handles, brass tapped bushings


HGC

Application: duroplast products  
Additional Info: Duroplast  
Material: Duroplast FS 31  
Standard-Colour: black



Order No.	Spacing	Length	Depth	Height	Width	Thread	Colour	PU*	MOQ**
	A	L	t	H	B	M			
T11530010001000	109 +/- 1	124	13	45	21	M 6	black	25	150
T11530020001000	132 +/- 1	148	13	54	24	M 8	black	50	150

Please note that the product illustrations are exemplary images that could deviate from the ordered/delivered products.  
All of the dimensions are in mm should nothing to the contrary be stated.  
\*PU = Packaging Unit, SW = Spanner opening, n.w. = not detachable, o. K. = excl. The head, o. B. = excl. The collar, m. R. = with the radius, MOQ = Minimum Order Quantity.  
\*\* MOQ: Parts with MOQ, set-up costs may apply.

 We exclusively sell to the trade and industry. Please note our minimum order quantities and the minimum order value per delivery.  
We would be pleased to send you an offer that is tailored to your needs should you require special colours, deviating dimensions, bioplastics, or larger order quantities.