

6

Height adjustment

For square, rectangular, triangular, oval, and round tubes. Height adjustment for wooden furniture.

**YG2**

Page: 2

**JLR**

Page: 3

**JXB**

Page: 4

**JXF 1**

Page: 5

**JXF 2**

Page: 6

**JXL**

Page: 7

**JXM**

Page: 8

**JL 1**

Page: 9

**JL 2**

Page: 10

**JL 3**

Page: 11

**JLA 1**

Page: 12

**JLA 3**

Page: 13

**JXQ 1**

Page: 14

**JXQ 2**

Page: 15

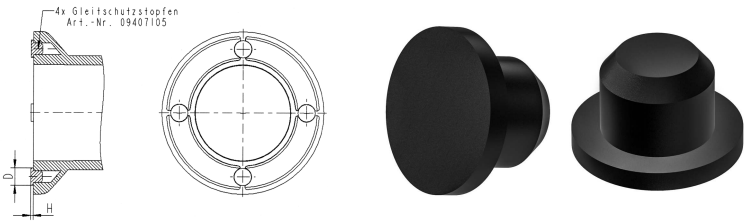
**JXV**

Page: 16

Non-slip plugs


YG2

Application:
Material: polyethylene
Standard-Colour: uncolored



Order No.	Head Ø	Head height	For drilled hole Ø	Colour	PU*	MOQ**
094071050004001	7,5	1,0	5,0	nature	2500	-

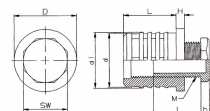
Please note that the product illustrations are exemplary images that could deviate from the ordered/delivered products.
All of the dimensions are in mm should nothing to the contrary be stated.
*PU = Packaging Unit, SW = Spanner opening, n.w. = not detachable, o. K. = excl. The head, o. B. = excl. The collar, m. R. = with the radius, MOQ = Minimum Order Quantity.
** MOQ: Parts with MOQ, set-up costs may apply.

 We exclusively sell to the trade and industry. Please note our minimum order quantities and the minimum order value per delivery.
We would be pleased to send you an offer that is tailored to your needs should you require special colours, deviating dimensions, bioplastics, or larger order quantities.

Adjustable feet with plastic thread

Application: for round tubes
Material: polyamide
Standard-Colour: black

JLR




Order No.	Tube outside Ø	Height	Ribs Ø	Length	Adjusting screw	SW	Colour	PU*	MOQ**
	D	H	d1 / d	L	M x l x h				
070000200001000	20x1-1,5	5,0	19,0 / 16,0	33,0	12x27x5,0	19	black	2000	-
070000220001000	22x1,5-2	5,0	20,5 / 17,5	33,0	12x27x5,0	19	black	4000	4000
070000250001000	25x1-2	5,0	23,5 / 19,5	33,0	12x27x5,0	19	black	1500	-
070000280001000	28x1-2	5,0	26,5 / 22,5	33,0	16x31x5,0	27	black	1250	-
070000300001000	30x1,5-2	5,0	29,0 / 25,5	26,0	22x29x5,0	27	black	1250	-
070000320001000	32x1-2	5,0	29,5 / 27,0	33,0	22x29x5,0	27	black	1000	-
070000350001000	35x1-2	5,0	33,5 / 29,0	33,0	22x29x5,0	27	black	900	-
070000380001000	38x1,5-2	5,0	34,5 / 33,0	33,0	22x29x5,0	27	black	750	-
070000400001000	40x1-2	5,0	38,5 / 36,0	33,0	22x29x5,0	27	black	600	-
070000420001000	42x1,5-2	5,0	40,5 / 37,0	33,0	22x29x5,0	27	black	600	-
070000450001000	45x1,5-2	5,0	41,5 / 40,5	33,0	22x29x5,0	27	black	500	-
070000500001000	50x1,5-2	5,0	47,5 / 43,5	33,0	22x29x5,0	27	black	400	-

Please note that the product illustrations are exemplary images that could deviate from the ordered/delivered products.

All of the dimensions are in mm should nothing to the contrary be stated.

*PU = Packaging Unit, SW = Spanner opening, n.w. = not detachable, o. K. = excl. The head, o. B. = excl. The collar, m. R. = with the radius, MOQ = Minimum Order Quantity.

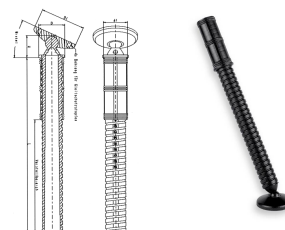
** MOQ: Parts with MOQ, set-up costs may apply.

 We exclusively sell to the trade and industry. Please note our minimum order quantities and the minimum order value per delivery.
We would be pleased to send you an offer that is tailored to your needs should you require special colours, deviating dimensions, bioplastics, or larger order quantities.

Height adjustment with movable base

Application: for round tubes
Material: polyamide GF
Standard-Colour: black

JXB



Order No.	Tube outside Ø	Rib Ø	Screwed in height	Adjusting angle	Base outside Ø	Total length L	Adjustment range	Colour	PU*	MOQ**
	D	d1	H		D1	L				
070011400001000	40x1,5	37,3	34,0	0-40°	68,0	270,0	170	black	80	-
070041400001000	40x1,5	37,3	34,0	0-40°	68,0	185,0	100	black	80	240
070012400001000	40x2	36,5	34,0	0-40°	68,0	270,0	170	black	80	80
070042400001000	40x2	36,5	34,0	0-40°	68,0	185,0	100	black	100	400
070041420001000	42x1,5	39,3	34,0	0-40°	68,0	185,0	100	black	100	400
070012420001000	42x2	38,3	34,0	0-40°	68,0	270,0	170	black	80	240
070042420001000	42x2	38,3	34,0	0-40°	68,0	185,0	100	black	100	400

Please note that the product illustrations are exemplary images that could deviate from the ordered/delivered products.

All of the dimensions are in mm should nothing to the contrary be stated.

*PU = Packaging Unit, SW = Spanner opening, n.w. = not detachable, o. K. = excl. The head, o. B. = excl. The collar, m. R. = with the radius, MOQ = Minimum Order Quantity.

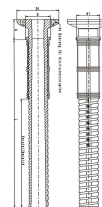
** MOQ: Parts with MOQ, set-up costs may apply.

We exclusively sell to the trade and industry. Please note our minimum order quantities and the minimum order value per delivery.
We would be pleased to send you an offer that is tailored to your needs should you require special colours, deviating dimensions, bioplastics, or larger order quantities.

Height adjustment with fixed large base

Application: for round tubes
Material: polyamide GF
Standard-Colour: black

JXF 1




Order No.	Tube outside Ø	Rib Ø	Screwed in spindle	Base outside Ø	Total length	Max. adjustment range	Colour	PU*	MOQ**
	D	d1	H	D1	L				
070001400001000	40 x 1,5	37,3	20,5	68,0	283,5	170	black	50	450
070031400001000	40 x 1,5	37,3	20,5	68,0	198,5	100	black	100	-
070002400001000	40 x 2	36,5	20,5	68,0	283,5	170	black	50	450
070032400001000	40 x 2	36,5	20,5	68,0	198,5	100	black	100	300
070001420001000	42 x 1,5	39,3	20,5	68,0	283,5	170	black	50	250
070031420001000	42 x 1,5	39,3	20,5	68,0	198,5	100	black	100	300
070032420001000	42 x 2	38,3	20,5	68,0	198,5	100	black	100	400

Please note that the product illustrations are exemplary images that could deviate from the ordered/delivered products.

All of the dimensions are in mm should nothing to the contrary be stated.

*PU = Packaging Unit, SW = Spanner opening, n.w. = not detachable, o. K. = excl. The head, o. B. = excl. The collar, m. R. = with the radius, MOQ = Minimum Order Quantity.

** MOQ: Parts with MOQ, set-up costs may apply.

 We exclusively sell to the trade and industry. Please note our minimum order quantities and the minimum order value per delivery.
We would be pleased to send you an offer that is tailored to your needs should you require special colours, deviating dimensions, bioplastics, or larger order quantities.

Height adjustment with fixed small base

Application: for round tubes
Material: polyamide GF
Standard-Colour: black

JXF 2




Order No.	Tube outside Ø	Rib Ø	Screw in spindle	Base outside Ø	Total length	Max. adjustment range	Colour	PU*	MOQ**
	D	d1	H	D1	L				
070071400001000	40 x 1,5	37,3	20,5	40,0	283,5	170	black	100	-
070371400001000	40 x 1,5	37,3	20,5	40,0	198,5	100	black	100	500
070072400001000	40 x 2	36,5	20,5	40,0	283,5	170	black	100	-
070372400001000	40 x 2	36,5	20,5	40,0	198,5	100	black	100	-
070071420001000	42 x 1,5	39,3	20,5	40,0	283,5	170	black	50	250
070371420001000	42 x 1,5	39,3	20,5	40,0	198,5	100	black	50	250
070072420001000	42 x 2	38,3	20,5	40,0	283,5	170	black	50	400
070372420001000	42 x 2	38,3	20,5	40,0	198,5	100	black	50	400

Please note that the product illustrations are exemplary images that could deviate from the ordered/delivered products.

All of the dimensions are in mm should nothing to the contrary be stated.

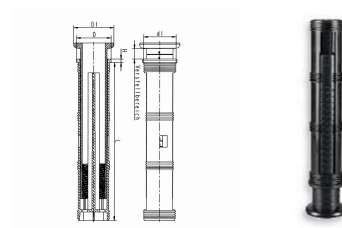
*PU = Packaging Unit, SW = Spanner opening, n.w. = not detachable, o. K. = excl. The head, o. B. = excl. The collar, m. R. = with the radius, MOQ = Minimum Order Quantity.

** MOQ: Parts with MOQ, set-up costs may apply.

 We exclusively sell to the trade and industry. Please note our minimum order quantities and the minimum order value per delivery.
We would be pleased to send you an offer that is tailored to your needs should you require special colours, deviating dimensions, bioplastics, or larger order quantities.

Height adjustment

Application: for round tubes
Material: acrylonitrile butadiene styrene
Standard-Colour: black



Order No.	Tube outside Ø	Rib Ø	Flange height	Base outside Ø	Adjustment range	Colour	PU*	MOQ**
	D	d1	H	D1				
070011600001000	60x1,5	57,3	6,0	70,0	0-200	black	50	-
070012600001000	60x2,0	56,3	6,0	70,0	0-200	black	50	-
070001600001000	60x1,5	57,3	6,0	SW 60	0-200	black	50	250
070002600001000	60x2,0	56,3	6,0	SW 60	0-200	black	50	-

Please note that the product illustrations are exemplary images that could deviate from the ordered/delivered products.

All of the dimensions are in mm should nothing to the contrary be stated.

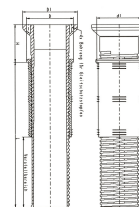
*PU = Packaging Unit, SW = Spanner opening, n.w. = not detachable, o. K. = excl. The head, o. B. = excl. The collar, m. R. = with the radius, MOQ = Minimum Order Quantity.

** MOQ: Parts with MOQ, set-up costs may apply.

We exclusively sell to the trade and industry. Please note our minimum order quantities and the minimum order value per delivery.
We would be pleased to send you an offer that is tailored to your needs should you require special colours, deviating dimensions, bioplastics, or larger order quantities.

Height adjustment

Application: for round tubes
Material: acrylonitrile butadiene styrene
Standard-Colour: black



Order No.	Tube outside Ø	Rib Ø	Screwed in spindle	Base outside Ø	Total length	Adjustment range	Colour	PU*	MOQ**
	D	d1	H	D1	L				
070019510001000	50 x 1,5	47,3	20,5	50,0	213	120	black	75	-
070019660001000	60 x 1,5	57,3	20,5	60	213	120	black	50	100
070018660001000	60 x 2	56,3	20,5	60	213	120	black	50	350
070019530001000	50 x 1,5	47,3	20,5	60	313	200	black	60	240
070018610001000	60 x 2	56,3	20,5	66	213	120	black	50	350
070019610001000	60 x 1,5	57,3	20,5	66	213	120	black	50	100
070018530001000	50 x 2	46,3	20,5	60	313	200	black	60	180
070018510001000	50 x 2	46,3	20,5	50,0	213	120	black	75	300
070019500001000	50 x 1,5	47,3	20,5	60,0	213	120	black	80	-
070018500001000	50 x 2	46,3	20,5	60,0	213	120	black	50	-
070018550001000	55 x 2	51,2	20,5	65,0	213	120	black	50	-
070019600001000	60 x 1,5	57,3	20,5	70,0	213	120	black	50	-
070018600001000	60 x 2	56,3	20,5	70,0	213	120	black	50	-

Please note that the product illustrations are exemplary images that could deviate from the ordered/delivered products.

All of the dimensions are in mm should nothing to the contrary be stated.

*PU = Packaging Unit, SW = Spanner opening, n.w. = not detachable, o. K. = excl. The head, o. B. = excl. The collar, m. R. = with the radius, MOQ = Minimum Order Quantity.

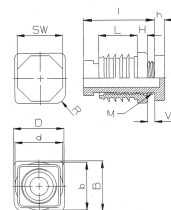
** MOQ: Parts with MOQ, set-up costs may apply.

We exclusively sell to the trade and industry. Please note our minimum order quantities and the minimum order value per delivery.
We would be pleased to send you an offer that is tailored to your needs should you require special colours, deviating dimensions, bioplastics, or larger order quantities.

Adjustable feet with plastic trapezoid thread

JL 1

Application: for square and rectangular tubes
Material: polyamide
Standard-Colour: black




Order No.	Tube dimension	Height	Ribbed section	Length	Adjusting screw	SW	Radius	Colour	PU*	MOQ**
	D x B	H	d x b	L	M x l x h		R			
072030300001000	30x30x1-2	6,0	28,7x28,7	23,0	20x4x20x5,0	27	-	black	500	-
072130300001000	30x30x1-2	6,0	28,7x28,7	23,0	20x4x20x5,0	27	R6	black	500	2000

Please note that the product illustrations are exemplary images that could deviate from the ordered/delivered products.

All of the dimensions are in mm should nothing to the contrary be stated.

*PU = Packaging Unit, SW = Spanner opening, n.w. = not detachable, o. K. = excl. The head, o. B. = excl. The collar, m. R. = with the radius, MOQ = Minimum Order Quantity.

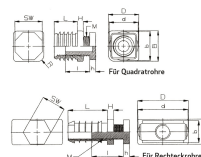
** MOQ: Parts with MOQ, set-up costs may apply.

 We exclusively sell to the trade and industry. Please note our minimum order quantities and the minimum order value per delivery.
We would be pleased to send you an offer that is tailored to your needs should you require special colours, deviating dimensions, bioplastics, or larger order quantities.

Adjustable feet with plastic thread

Application: for square and rectangular tubes
 Material: polyethylene, polyamide
 Standard-Colour: black

JL 2



Order No.	Tube dimension	Tube wall thickness	Height	Ribbed section	Length	Adjusting screw	SW	Radius	Material	Colour	PU*	MOQ**
	D x B		H	d x b	L	M x l x h		R				
070020200001000	20x20	1,5-2	5,0	17,4x17,4	17,0	10x24x4,0	20	-	PA	black	1750	-
070025250001000	25x25	1-2	5,5	23,3x23,3	25,0	16x26x6,0	27	-	PE	black	1000	-
070125250001000	25x25	1-2	5,5	23,3x23,3	25,0	16x26x6,0	27	R6	PE	black	1000	2000
070030300001000	30x30	1-2	5,5	28,6x28,6	23,0	20x25x6,0	27	-	PE	black	1000	-
070130300001000	30x30	1-2	5,5	28,6x28,6	23,0	20x25x6,0	27	R6	PE	black	1000	-
070035350001000	35x35	1,5	5,0	32,5x32,5	29,2	22x20x5,0	28	-	PA	black	550	-
070040400001000	40x40	1,5 - 2	5,0	37,0x37,0	29,0	22x20x5,0	28	-	PA	black	425	-
070030200001000	30x20	1-2	5,0	28,5x18,0	32,0	12x27x5,0	20	-	PA	black	1250	-
070040200001000	40x20	1,5	5,0	39,5x17,5	32,0	12x27x5,0	20	-	PA	black	1000	-
070040300001000	40x30	1-2	5,0	38,5x28,5	32,0	22x30x5,0	28	-	PA	black	700	-
070340300001000	40x30	3	5,0	35,0x25,0	32,0	22x30x5,0	28	-	PA	black	250	-
070050200001000	50x20	1-2	5,0	48,5x18,5	32,0	12x30x5,0	20	-	PA	black	750	-
070060300001000	60x30	1-2	5,0	58,5x28,5	32,0	22x47x5,0	27	-	PA	black	500	-

Please note that the product illustrations are exemplary images that could deviate from the ordered/delivered products.

All of the dimensions are in mm should nothing to the contrary be stated.

*PU = Packaging Unit, SW = Spanner opening, n.w. = not detachable, o. K. = excl. The head, o. B. = excl. The collar, m. R. = with the radius, MOQ = Minimum Order Quantity.

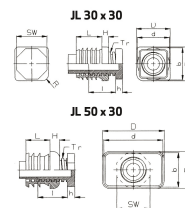
** MOQ: Parts with MOQ, set-up costs may apply.

! We exclusively sell to the trade and industry. Please note our minimum order quantities and the minimum order value per delivery.
 We would be pleased to send you an offer that is tailored to your needs should you require special colours, deviating dimensions, bioplastics, or larger order quantities.

Adjustable feet with plastic trapezoid thread

Application: for square and rectangular tubes
Material: polyethylene
Standard-Colour: black

JL 3



Order No.	Tube dimension	Height	Ribbed section	Length	Adjusting screw	SW	Radius	Colour	PU*	MOQ**
	D x B	H	d x b	L	Tr x l x h		R			
071030300001000	30x30x1-2	6,0	28,7x28,7	22,0	20x4x20x5,0	27	-	black	500	-
071130300001000	30x30x1-2	6,0	28,7x28,7	22,0	20x4x20x5,0	27	R6	black	500	2000
071050300001000	50x30x1,5	9,5	48,5x28,3	20,0	20x4x20x5,0	27	-	black	500	2000

Please note that the product illustrations are exemplary images that could deviate from the ordered/delivered products.

All of the dimensions are in mm should nothing to the contrary be stated.

*PU = Packaging Unit, SW = Spanner opening, n.w. = not detachable, o. K. = excl. The head, o. B. = excl. The collar, m. R. = with the radius, MOQ = Minimum Order Quantity.

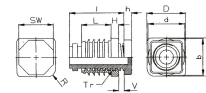
** MOQ: Parts with MOQ, set-up costs may apply.

We exclusively sell to the trade and industry. Please note our minimum order quantities and the minimum order value per delivery.
We would be pleased to send you an offer that is tailored to your needs should you require special colours, deviating dimensions, bioplastics, or larger order quantities.

Adjustable feet with plastic thread and internal safety ring

Application: for square tubes
Material: polyethylene
Standard-Colour: black

JLA 1



Order No.	Tube dimension	Height	Ribbed section	Length	Adjusting screw	SW	Radius	Colour	PU*	MOQ**
	D x B	H	d x b	L	M x l x h		R			
073030300001000	30x30x1-2	5,5	28,6x28,6	23,0	20x41x6,0	27	-	black	500	2000
073130300001000	30x30x1-2	5,5	28,6x28,6	23,0	20x41x6,0	27	R6	black	500	2000

Please note that the product illustrations are exemplary images that could deviate from the ordered/delivered products.

All of the dimensions are in mm should nothing to the contrary be stated.

*PU = Packaging Unit, SW = Spanner opening, n.w. = not detachable, o. K. = excl. The head, o. B. = excl. The collar, m. R. = with the radius, MOQ = Minimum Order Quantity.

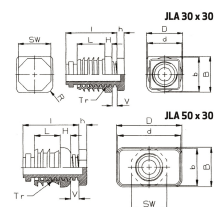
** MOQ: Parts with MOQ, set-up costs may apply.

We exclusively sell to the trade and industry. Please note our minimum order quantities and the minimum order value per delivery.
We would be pleased to send you an offer that is tailored to your needs should you require special colours, deviating dimensions, bioplastics, or larger order quantities.

Adjustable feet with plastic thread and internal safety ring

Application: for square and rectangular tubes
Material: polyethylene
Standard-Colour: black

JLA 3



Order No.	Tube dimension	Height	Ribbed section	Length	Adjusting screw	SW	Radius	Colour	PU*	MOQ**
	D x B	H	d x b	L	Tr x l x h		R			
074030300001000	30x30x1-2	6,0	28,6x28,6	22,0	20x4x42x5,0	27	-	black	500	2000
074130300001000	30x30x1-2	6,0	28,6x28,6	22,0	20x4x42x5,0	27	R6	black	500	2000
074050300001000	50x30x1,5	9,5	48,5x28,3	20,0	20x4x42x5,0	27	-	black	500	2000

Please note that the product illustrations are exemplary images that could deviate from the ordered/delivered products.

All of the dimensions are in mm should nothing to the contrary be stated.

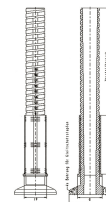
*PU = Packaging Unit, SW = Spanner opening, n.w. = not detachable, o. K. = excl. The head, o. B. = excl. The collar, m. R. = with the radius, MOQ = Minimum Order Quantity.

** MOQ: Parts with MOQ, set-up costs may apply.

We exclusively sell to the trade and industry. Please note our minimum order quantities and the minimum order value per delivery.
We would be pleased to send you an offer that is tailored to your needs should you require special colours, deviating dimensions, bioplastics, or larger order quantities.

Height adjustment

Application: for square tubes
Material: polyamide GF
Standard-Colour: black

JXQ 1


Order No.	Tube dimension	Rib Ø	Screwed in spindle	Base outside Ø	Total length	Adjustment range	Colour	PU*	MOQ**
	D	d1	H	D1	L				
070084400001000	40x40x1,5	37,5x37,5	20,5	68	283,5	170	black	50	200
070094400001000	40x40x1,5	37,5x37,5	20,5	68	198,5	100	black	100	200
070084010001000	40x40x1,5	37,5x37,5	20,5	40	283,5	170	black	100	-
070094020001000	40x40x1,5	37,5x37,5	20,5	40	198,5	100	black	100	200
070024400001000	40 x 40 x 2	36,5 x 36,5	20,5	68	283,5	170	black	50	200
070034400001000	40 x 40 x 2	36,5 x 36,5	20,5	68	198,5	100	black	50	200
070044010001000	40 x 40 x 2	36,5 x 36,5	20,5	40	283,5	170	black	100	-
070044020001000	40 x 40 x 2	36,5 x 36,5	20,5	40	198,5	100	black	100	-

Please note that the product illustrations are exemplary images that could deviate from the ordered/delivered products.

All of the dimensions are in mm should nothing to the contrary be stated.

*PU = Packaging Unit, SW = Spanner opening, n.w. = not detachable, o. K. = excl. The head, o. B. = excl. The collar, m. R. = with the radius, MOQ = Minimum Order Quantity.

** MOQ: Parts with MOQ, set-up costs may apply.



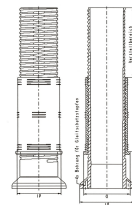
We exclusively sell to the trade and industry. Please note our minimum order quantities and the minimum order value per delivery.

We would be pleased to send you an offer that is tailored to your needs should you require special colours, deviating dimensions, bioplastics, or larger order quantities.

Height adjustment

Application: for square tubes
Material: acrylonitrile butadiene styrene
Standard-Colour: black

JXQ 2



Order No.	Tube dimension	Rib dimension Ø	Screwed in spindle	Base outside Ø	Base outside	Total length	Adjustment range	Colour	PU*	MOQ**
	D	d1	H	D1	D1 x D1	L				
070035510001000	50x50x1,5	47,5x47,5	20,5	50,0	-	213	120	black	80	-
070026670001000	60x60x2	56,5x56,5	20,5	66	-	213	120	black	50	100
070026660001000	60x60x2	56,5x56,5	20,5	60	-	213	120	black	50	-
070025520001000	50x50x2	46,5x46,5	20,5	60	-	313	200	black	60	-
070025510001000	50x50x2	46,5x46,5	20,5	50,0	-	213	120	black	75	-
070035500001000	50x50x1,5	47,5x47,5	20,5	60,0	-	213	120	black	50	-
070025500001000	50x50x2	46,5x46,5	20,5	60,0	-	213	120	black	50	-
070045500001000	50x50x2	46,5x46,5	20,5	-	50x50	213	120	black	100	-
070055500001000	50x50x1,5	47,5x47,5	20,5	-	50x50	213	120	black	100	-
070026600001000	60x60x2	56,5x56x5	20,5	70,0	-	213	120	black	50	-

Please note that the product illustrations are exemplary images that could deviate from the ordered/delivered products.

All of the dimensions are in mm should nothing to the contrary be stated.

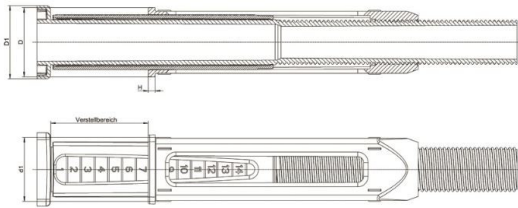
*PU = Packaging Unit, SW = Spanner opening, n.w. = not detachable, o. K. = excl. The head, o. B. = excl. The collar, m. R. = with the radius, MOQ = Minimum Order Quantity.

** MOQ: Parts with MOQ, set-up costs may apply.

We exclusively sell to the trade and industry. Please note our minimum order quantities and the minimum order value per delivery.
We would be pleased to send you an offer that is tailored to your needs should you require special colours, deviating dimensions, bioplastics, or larger order quantities.


Height adjustment

Application: for square tubes
Material: ABS
Standard-Colour: black



Order No.	Tube dimension	Rib dimension	Flange height	Foot dimension	Adjustment range	Colour	PU*	MOQ**
	D	d1	H	D1				
070090500001000	50x50x2	46,8x46,8	5,0	53,0x53,0	0-140	black	60	-

Please note that the product illustrations are exemplary images that could deviate from the ordered/delivered products.
All of the dimensions are in mm should nothing to the contrary be stated.
*PU = Packaging Unit, SW = Spanner opening, n.w. = not detachable, o. K. = excl. The head, o. B. = excl. The collar, m. R. = with the radius, MOQ = Minimum Order Quantity.
** MOQ: Parts with MOQ, set-up costs may apply.

 We exclusively sell to the trade and industry. Please note our minimum order quantities and the minimum order value per delivery.
We would be pleased to send you an offer that is tailored to your needs should you require special colours, deviating dimensions, bioplastics, or larger order quantities.